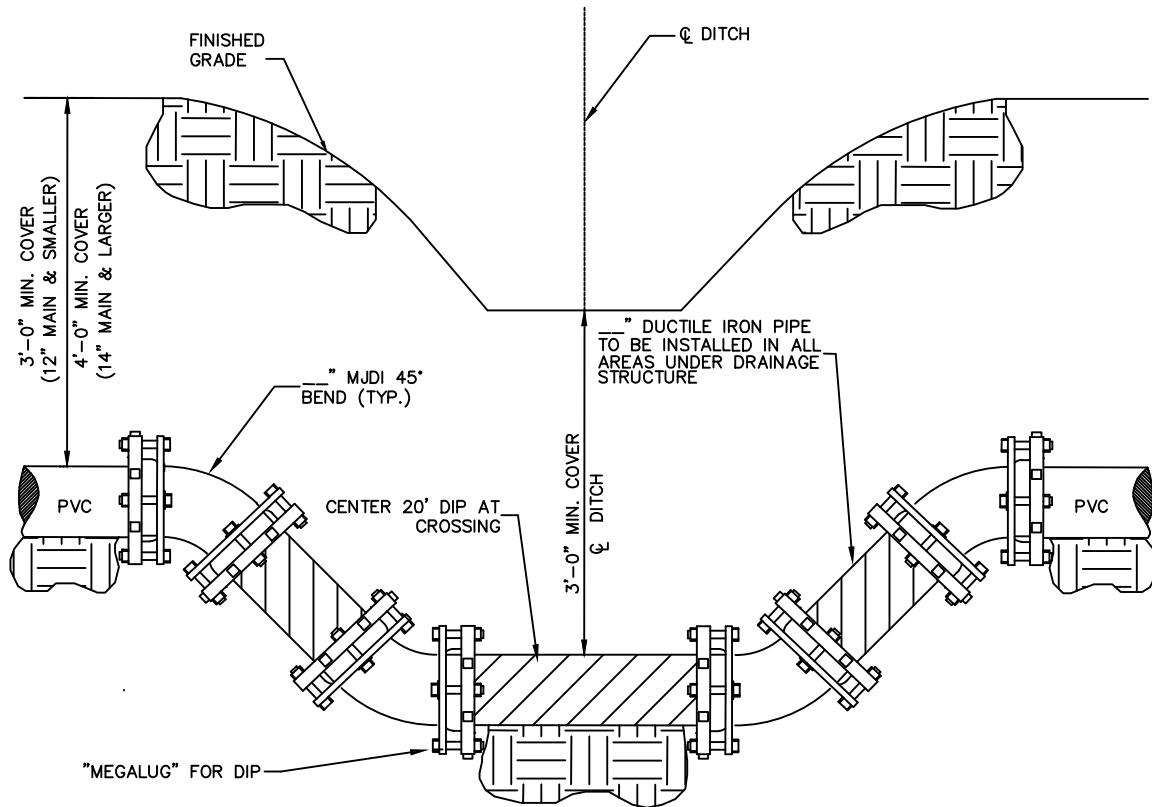


NOTES:

1. TYPICAL LENGTH OF DIP LEG DIRECTLY UNDER DITCH WILL BE 20' MINIMUM.
2. WIDER DITCHES WILL REQUIRE LONGER LENGTHS AND UP LEGS OF DEFLECTION SHALL MEET 3' MINIMUM COVER REQUIREMENTS.



TYPICAL DITCH
CROSSING DETAIL

NOT TO SCALE

WATER PANEL 12

**BERKELEY COUNTY WATER AND SANITATION
POTABLE WATER & SANITARY SEWER STANDARDS**

REVISED: 04/25/2023